

Workstation Systems



Training Systems



# 5 important reasons for choosing complete solutions by Elabo



## 1 The entire range of equipment

Elabo provides training devices which are expedient for the equipment of professional, function training rooms and for the realization of modern, successful teaching in electrical vocations. The Elabo services, too, set standards. For example, should calibration be required or should a device prove faulty, Elabo provides a free collect and return service and, if required, provides a device on loan which is fully compatible with the client's electronics systems.



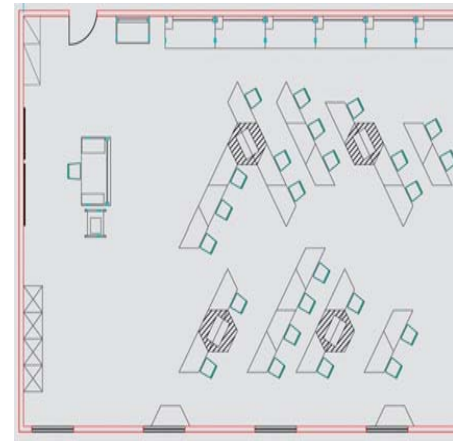
## 2 Always at the cutting edge

Elabo is quick to respond to the latest technological and pedagogical developments with solutions - hardware and software, teaching material and services - for training in electrical vocations. Elabo is also able to provide fittings appropriate for training in new vocations right away. All components fit seamlessly into one another; the software and teaching material, too, are perfectly aligned to one another.



## 3 Outstanding handling

Systems made by Elabo are designed in modular form and can be adapted to changes in training concepts at any time. They make it easy for teachers to concentrate on their core task - teaching. All operating functions are mainly self-explanatory or quick and easy to learn. Use of the devices and furniture is easy to grasp; adaptations for new projects are uncomplicated and quickly carried out. Not only that, but the devices and furniture are compact and space-saving. They can be dismantled, easily transported and stored in a space-saving manner.



## 4 Optimum learning environment

Trainees, schoolchildren and students alike love the training stations by Elabo. They have all the devices required for practical exercises, usually within reach. The intelligent space-saving concept allows for generously-sized work surfaces. The devices are stored as in a cockpit, interlocked in racks. The groundbreaking cable management system ensures that cables do not get in the way when people are handling test objects. The well thought-out Elabo concept convinces users with its technical-aesthetical forms and colours, which are just like those to be found in top industrial companies. The highly professional standard gives pupils a preliminary feeling of being in their vocational future and palpably motivates them.



## 5 Convincingly competent in practical work

Using education systems by Elabo, teachers can create advanced and professionally substantial lessons. These lessons are perfectly related to future practice. The modern teaching material strengthens teachers' authority as the mediators of high quality knowledge. They can update their knowledge on the latest technology and changes in standards at Elabo seminars. Using Elabo software and network equipment control functions, they are able to assert themselves firmly and confidently against troublemakers. They are able to provide a convincing basis for the marks given through (automatically generated) documentation of the performances of trainees, schoolchildren and students in practical lessons.



# Specialist diversity



■ Elabo provides a wide range of products for training and apprenticeships in the specialist fields of electronics and electrotechnology as well as related fields. These include desk systems and desktop racks, inserts with power supply systems and measuring and testing technology, mobile experimentation elements for didactic use, storage furniture and comprehensive teaching material. If required, the teaching material can incorporate the curricula for the respective training institution.

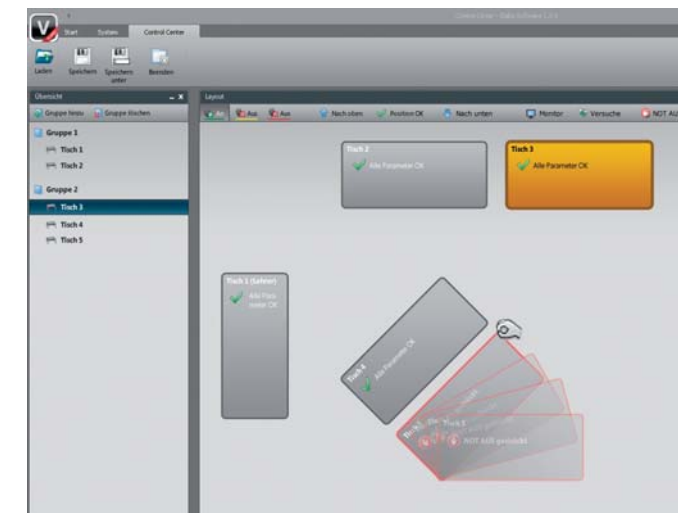


■ Networked devices and systems are now used in modern development laboratories. Automated series of measurements and circuit analyses combined with permanent documentation make it easy to monitor the function of components and circuits. Using the Elabo network technology and software, you can now pave the way for your pupils directly into such departments and equip them for the requirements there.



■ Desks form the basic modules for training stations made by Elabo. They act as stable supports for base cabinets and racks of very different types, and can be linked into diverse arrangements. Electronic devices are integrated interlocked in racks, cables are stored safely and securely fixed directly to desks or to vertical profiles. Elabo uses two program series to cater for different requirements. The EcoTecSP convinces with its sturdy and functional steel tube constructions and provides an extremely attractive entry-level price. InForm, on the other hand, provides extreme flexibility, unusual sturdiness and the so-called "Open Space System", using which subsequent changes can be carried out very easily.

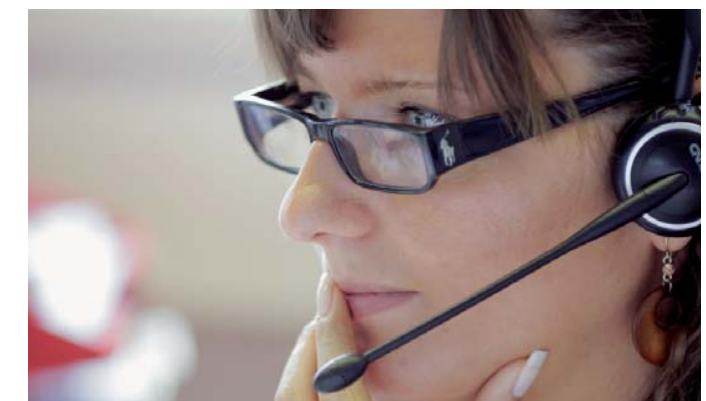
■ Electrical instruments can be integrated as modules into racks using inserts made by Elabo. The range of products extends from simple insert plates right up to inserts with remote controllable supply and meter systems. It comprises all devices expedient for training in very different electrical vocations. In this way highly compact electrical learning stations are created with maximum efficiency.



■ In addition, you will receive an expedient and well thought-out tool for the preparation of your lessons. For example, you can prepare lessons using test schedules, simulate faulty signals and thereby initiate a pupil in cause analyses, or transmit a central demonstration to all monitors. Furthermore, you can make your classroom look like a real vocational workplace and control it professionally. You can obtain a perfect overview of the individual desks, gain access to the screens of each individual pupil's station and can if required also intervene via remote control at any time.

## The best advice from the start.

■ The ideal way to obtain a training laboratory which accords with your requirements: from planning and realisation through user training to service across the entire product lifecycle; whenever the laboratory presents you with important tasks, our experts are there for you.



# References

## Training centres:

Knorr Bremse Systeme  
für Nutzfahrzeuge GmbH ALDERSBACH

Maschinenbauschule ANSBACH

OSZ Energietechnik BERLIN

A & D analoges und digitales  
Schulungszentrum GmbH BERLIN

Berliner Stadtreinigungsbetriebe  
Ausbildungszentrum BERLIN

Hahn-Meitner-Institut Schülerlabor BERLIN

OSZ Versorgungstechnik  
Max-Taut-Schule BERLIN

Berufsbildende Schulen II  
Axel-Bruns-Schule CELLE

Gewerbliche Berufsschule CRAILSHEIM

Staatl. Berufsschule 1 DEGGENDORF

Berufsb. Schule des Kreises DETMOLD /  
Felix Fechenbach Kolleg

Staatl. Berufs-/Fachoberschule ERLANGEN

Staatl. Berufsschulen FREISING,  
LINDAU, INGOLSTADT

Eduard-Spranger-Schule HAMM

Wilhelm-Maybach-Schule HEILBRONN

Staatl. Berufsschulzentrum ILMENAU

Meisterschule für Handwerker  
KAISERSLAUTERN

Werner-von-Siemens-Schule FB  
Elektrotechnik KÖLN

Berufliches Schulzentrum 7  
Elektrotechnik LEIPZIG

Städt. Berufsschule NÜRNBERG

Hochtaunusschule HTS OBERURSEL

Berufliches Schulzentrum für Technik RIESA

Berufsbildende Schulen  
FREDENBERG SALZGITTER

Berufsbildungs- und  
Technologiezentrum STRAUBING

Staatl. Feintechschule  
VILLINGEN-SCHWENNINGEN

Friedrich-Schriedel-Schule WANGEN

Staatl. Fachoberschule und  
Berufsoberschule WEILHEIM I. OB

Staatl. Gewerbliche Technische  
Berufsbildende Schule WEIMAR

Berufsschulzentrum ZWICKAU



## Technical colleges:

AMBERG/WEIDEN, ANSBACH, AUGSBURG, BERLIN, BIBERACH, BRANDENBURG, DEGGENDORF, ELMSHORN, EMDEN, ESSLINGEN, FLENSBURG, FRANKFURT, HEIDE, HEILBRONN, INGOLSTADT, KARLSRUHE, KIEL, LAUSITZ, LÜBECK, MITTWEIDA, MÜNCHEN, NIEDERRHEIN, NORDHAUSEN, REGENSBURG, ST. AUGUSTIN, SCHMALKALDEN, STRALSUND, ULM, WEDEL, WIESBADEN, WOLFENBÜTTEL, WÜRZBURG, ZITTAU

## Higher technical educational institutions:

BRAUNAU ÖSTERREICH,  
KLAGENFURT ÖSTERREICH

## Technical colleges/Universities:

RWTH AACHEN, LEIPZIG, SAARBRÜCKEN,  
WISMAR

## Technical colleges/Universities:

BERLIN, CHEMNITZ, CLAUSTHAL-ZELLERFELD, DARMSTADT, DRESDEN,  
GRAZ ÖSTERREICH, ILMENAU, MÜNCHEN

## Technology Colleges:

ABBA SAUDI ARABIEN,  
AL HOFUF SAUDI ARABIEN

## Universities:

AUGSBURG, BREMEN, BRESCIA ITALIEN,  
DORTMUND, ERLANGEN, FREIBURG,  
FRANKFURT, GIessen, GÖTTINGEN,  
HALLE, HAMBURG, HEIDELBERG, KARLSRUHE, KASSEL, MAGDEBURG, MAINZ,  
MANNHEIM, NAVARRA SPANIEN,  
ROSTOCK, STUTTGART, TRIER, TÜBINGEN,  
ZWICKAU

Staatliche Fachoberschule ERLANGEN

Gesamthochschule KASSEL

Rheinhold-Würth-Hochschule KÜNZELSAU



Working environments for people with ideas.



7620APE/15-09-11 Subject to technical changes without notice.

ELABO GmbH –  
a company of the  
euromicron group  
Roßfelder Straße 56  
74564 Crailsheim  
Deutschland  
Fon +49 7951 307-0  
Fax +49 7951 307-66  
info@elabo.de  
www.elabo.de